

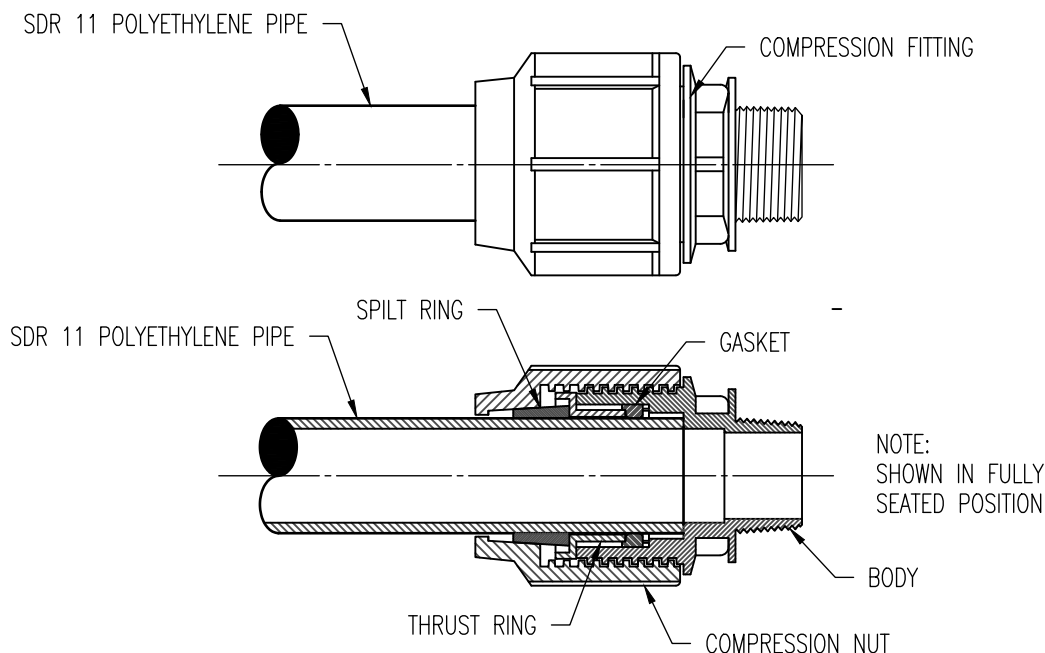
DATE: NOV. 2022

DRAWN BY: TGC

SCALE : NO SCALE

LOW PRESSURE SEWER FORCE MAIN COMPRESSION FITTING INSTRUCTIONS

TYPICAL SPECIFICATIONS
AND DETAILS



INSTALLATION STEPS :

1. CUT PIPE SQUARE
2. MAKE SURE PIPE IS ROUND AND HAS NOT BEEN FLATTENED
3. INSERT PIPE THROUGH COMPRESSION NUT. POSITION SPLIT RING ON THE END OF PIPE WITH THE TAPERED END TOWARD THE COMPRESSION NUT.
4. SLIDE COMPRESSION NUT OVER SPLIT RING AND ALIGN IT WITH THE THREADS ON THE BODY.
5. INSERT PIPE INTO THE BODY OF THE FITTING UNTIL FIRMLY SEATED.
6. TIGHTEN COMPRESSION NUT SECURELY TO THE FITTING BODY.

PRECAUTIONS :

1. ALWAYS PRESSURE TEST TO CHECK FOR LEAKS PRIOR TO BACKFILLING.
2. FITTINGS CAN BE DAMAGED BY IMPROPER HANDLING. PROTECT THREADS. DO NOT DROP. BACKFILL AND COMPACT CAREFULLY PER ASTM D2321 SO THAT FITTINGS ARE NOT STRESSED BY THE WEIGHT OF THE EARTH.
3. PROTECT BALL VALVE ASSEMBLIES FROM FREEZING. ATTEMPTING TO FORCIBLY OPEN OR CLOSE A FROZEN VALVE WILL DESTROY THE VALVE.

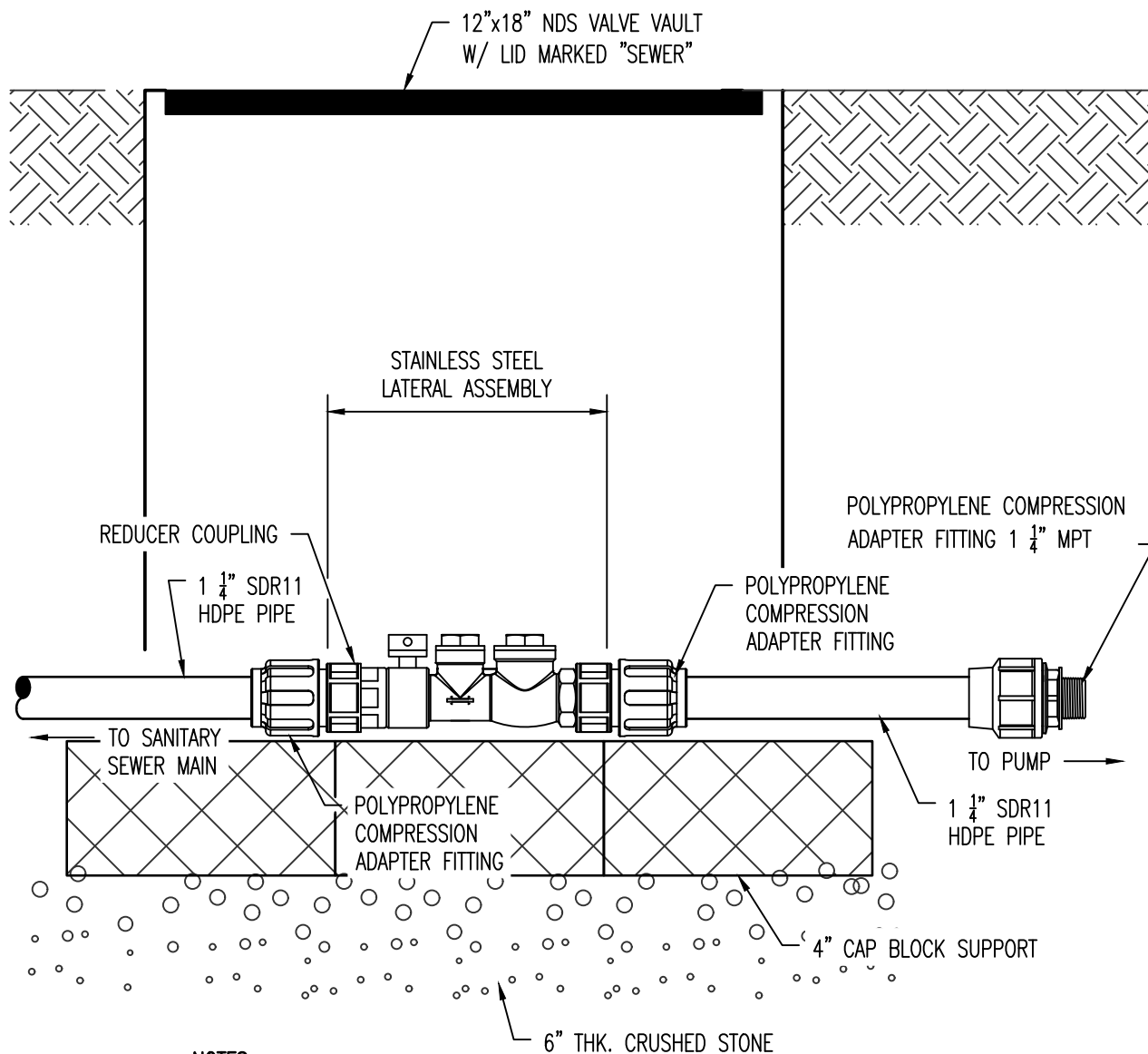
DATE: NOV. 2022

DRAWN BY: TGC

SCALE: NO SCALE

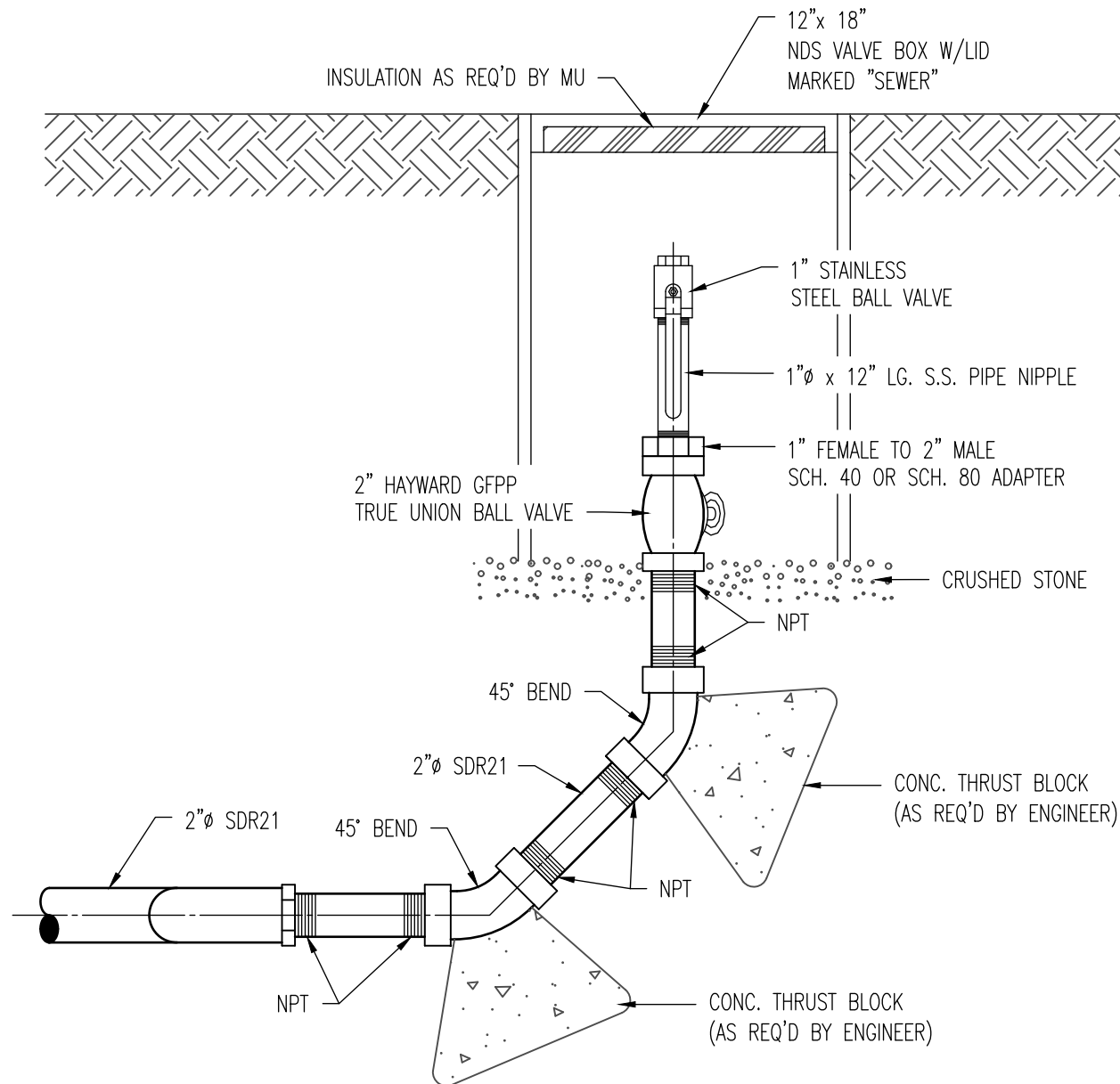
LOW PRESSURE SEWER FORCE MAIN STAINLESS STEEL LATERAL KIT

TYPICAL SPECIFICATIONS
AND DETAILS



NOTES:

1. STAINLESS STEEL CURB STOP/CHECK VALVE AND FITTINGS ARE PROVIDED SEPARATELY, TO BE ASSEMBLED BY OTHERS.
2. TO ASSEMBLE, APPLY A DOUBLE LAYER OF TEFLON TAPE AND A LAYER OF PIPE DOPE (SUPPLIED BY OTHERS) TO THE THREADS ON THE PLASTIC FITTINGS AND INSTALL PER THE MANUFACTURER'S INSTRUCTIONS. FOR STAINLESS STEEL FITTING INTO STAINLESS THREAD, USE PIPE DOPE OR TEFLON TAPE, BUT NOT BOTH.
3. ASSEMBLY IS TO BE PRESSURE TESTED BY OTHERS.
4. ASSEMBLY IS TO BE USED WITH SDR11 HDPE PIPE.
5. TO ORDER THE STAINLESS STEEL LATERAL KIT, USE PART NO. NC0193G01
6. CURB BOX IS TO BE ORDERED SEPARATELY, SEE ABOVE.



NOTE :
ALL THREADED CONNECTIONS
REQUIRE RECTORSEAL TRU-BLU
PIPE THREAD SEALANT

TYPICAL SPECIFICATIONS
AND DETAILS

LOW PRESSURE SEWER FORCE MAIN TYPICAL 2" FLUSHING CONNECTION

DATE: NOV. 2022

DRAWN BY: TGC

SCALE : NO SCALE



NOTES :

1. FOR 2" SDR21 MAIN - 2" GASKET x 2" GASKET x 1 1/2" MALE THREAD x 2" MALE THREAD PVC SCH. 40 OR SCH. 80 ADAPTER.
2. NO JOINTS BETWEEN FITTINGS - CONTINUOUS PIECE OR WELDED JOINTS ONLY.
3. ALL THREADED CONNECTIONS REQUIRE RECTORSEAL TRU-BLUE THREAD SEALANT.
4. THE CONTRACTOR SHALL SUBMIT THE FOLLOWING TO MORRISTOWN UTILITIES (ROB REEL) FOR APPROVAL PRIOR TO ORDERING MATERIALS.
 - A. SHOP DRAWINGS AND PRODUCT SPECIFICATIONS THAT MEET ALL MORRISTOWN UTILITIES SPECIFICATIONS.
 - B. MANUFACTURER'S CERTIFICATION.



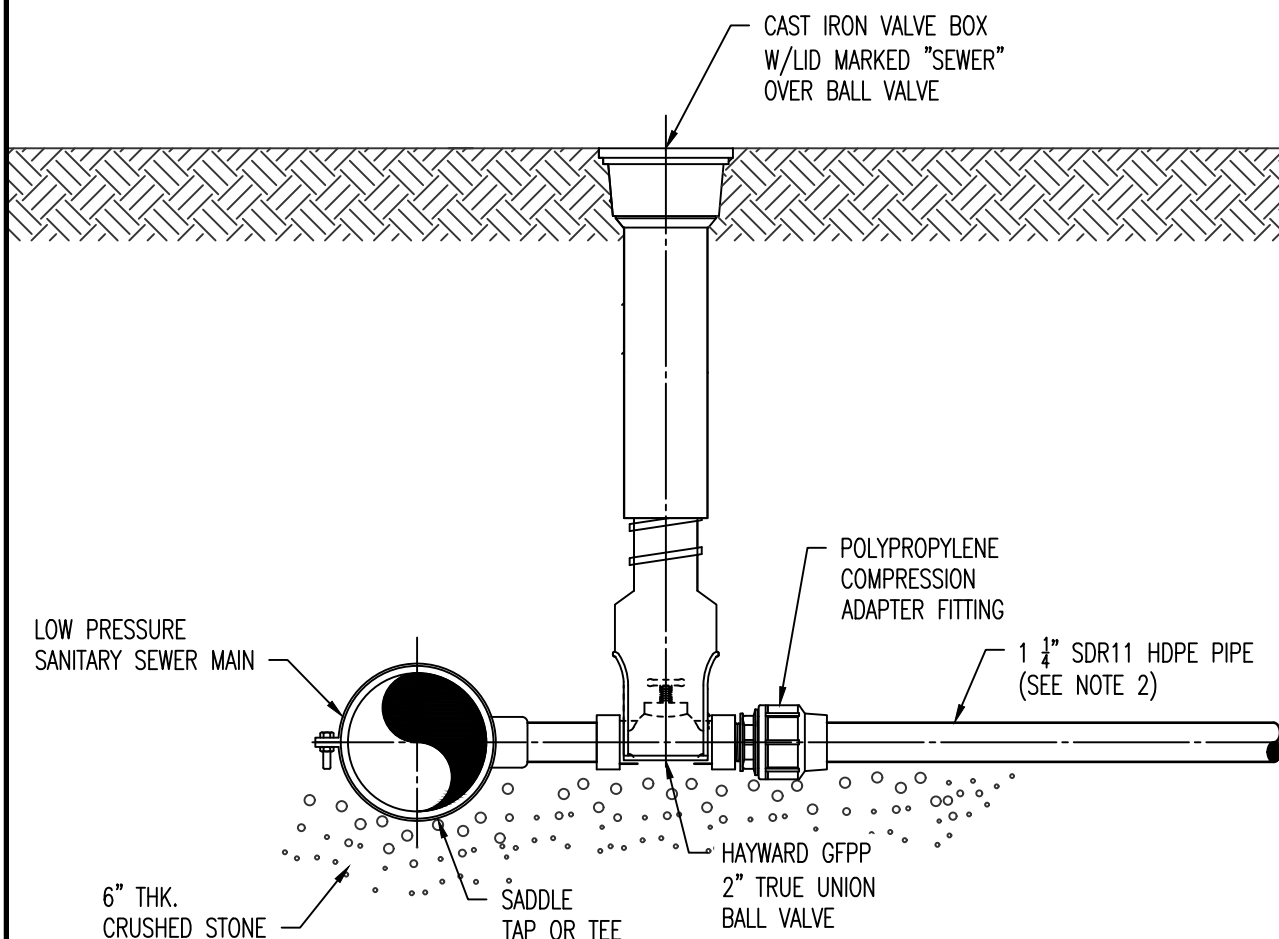
DATE: NOV. 2022

DRAWN BY: TGC

SCALE : NO SCALE

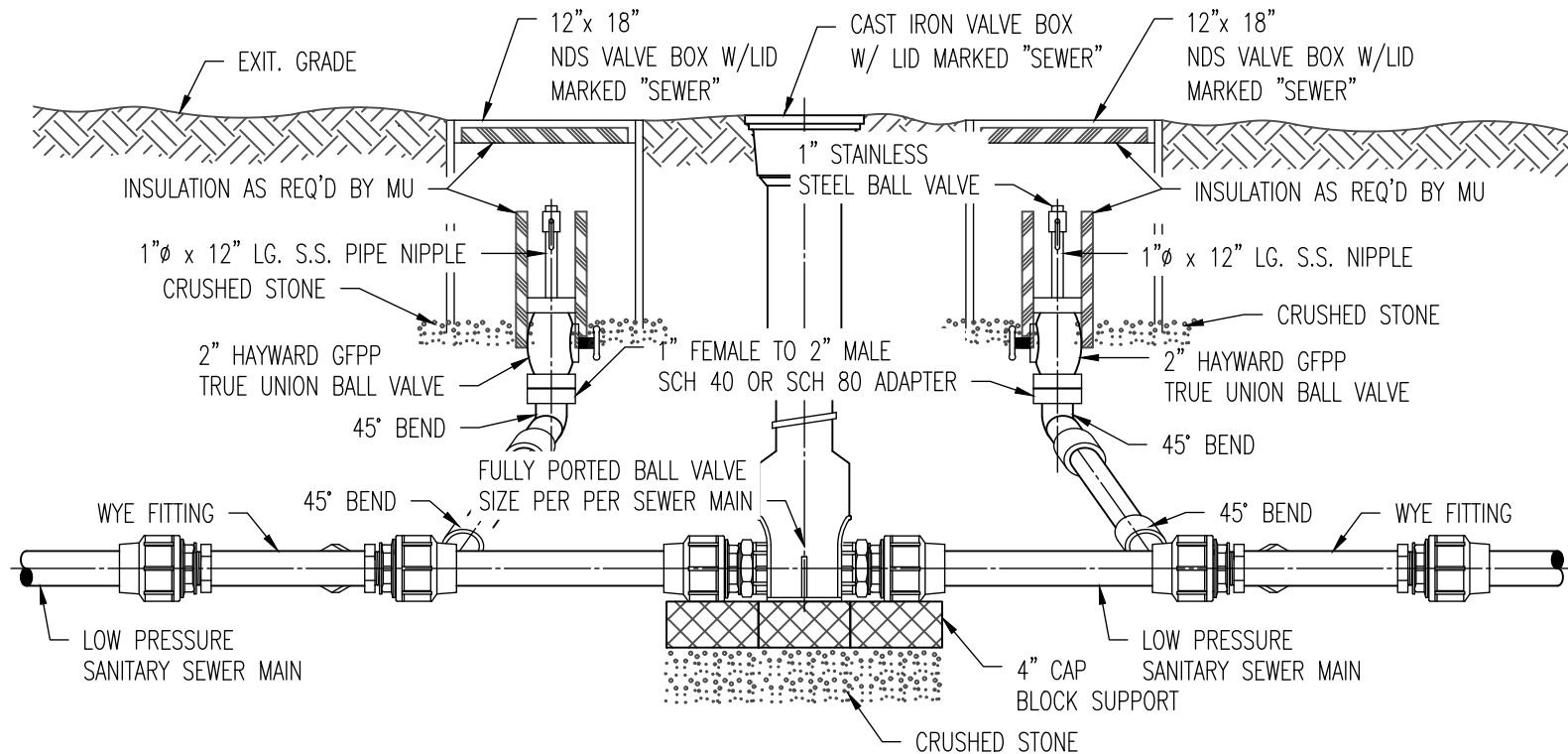
**LOW PRESSURE SEWER FORCE MAIN
TYPICAL CONNECTION TO L.P. SANITARY SEWER MAIN**

TYPICAL SPECIFICATIONS
AND DETAILS



NOTES:

1. ALL FLUSH CONNECTION PIPING AND FITTINGS SHALL BE PVC SDR21 WITH NPT ENDS AND FITTINGS
2. FINAL LOCATION OF FLUSH CONNECTIONS TO BE DETERMINED IN FIELD.
3. ALL THREADED CONNECTIONS REQUIRE RECTORSEAL TRU BLU PIPE THREAD SEALANT.



TYPICAL SPECIFICATIONS
AND DETAILS

LOW PRESSURE SEWER FORCE MAIN TYPICAL FLUSHING CONNECTION

DATE: NOV. 2022

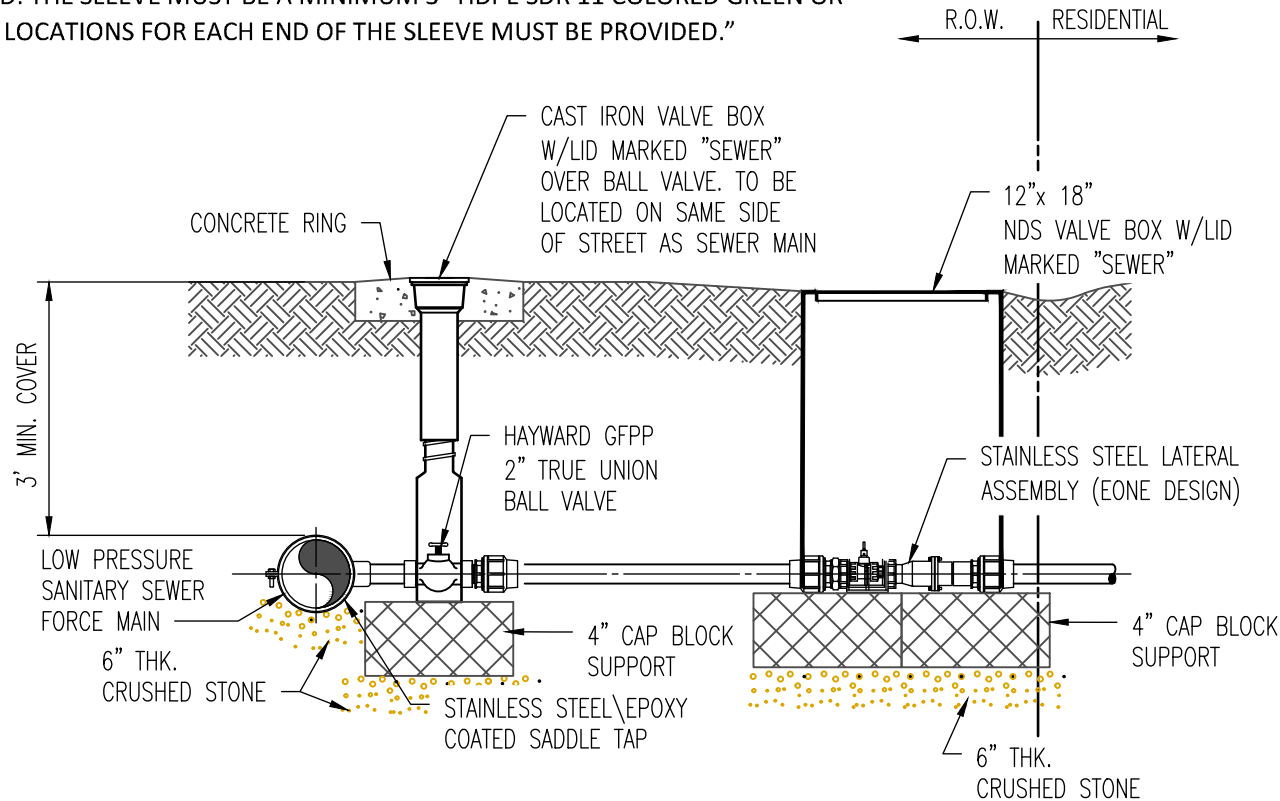
DRAWN BY: TGC

SCALE : NO SCALE



NOTE:

"IN CASES WHERE A LOW PRESSURE SEWER SERVICE MUST BE INSTALLED THROUGH STONE BACKFILL A CASING/SLEEVE IS REQUIRED. THE SLEEVE MUST BE A MINIMUM 3" HDPE SDR 11 COLORED GREEN OR WITH A GREEN STRIPE. GPS LOCATIONS FOR EACH END OF THE SLEEVE MUST BE PROVIDED."



NOTES :

1. FOR 2" SDR21 MAIN - 2" GASKET x 2" GASKET x 1 1/2" MALE THREAD x 2" MALE THREAD PVC SCH. 40 OR SCH. 80 ADAPTER.
2. NO JOINTS BETWEEN FITTINGS - CONTINUOUS PIECE OR WELDED JOINTS ONLY.
3. ALL THREADED CONNECTIONS REQUIRE RECTORSEAL TRU-BLUE THREAD SEALANT.

4. THE CONTRACTOR SHALL SUBMIT THE FOLLOWING TO MORRISTOWN UTILITIES (ROB REEL) FOR APPROVAL PRIOR TO ORDERING MATERIALS.
 - A. SHOP DRAWINGS AND PRODUCT SPECIFICATIONS THAT MEET ALL MORRISTOWN UTILITIES SPECIFICATIONS.
 - B. MANUFACTURER'S CERTIFICATION.
5. 2" SDR21 SANITARY SEWER MAIN : USE 2" GASKET x 2" GASKET x 1 1/2" THREADED AND 1 1/2" MALE THREAD x 2" MALE THREAD PVC SCH. 40 OR SCH. 80 ADAPTER. SUBMITTAL REQ'D TO MU FOR APPROVAL.

TYPICAL SPECIFICATIONS
AND DETAILS

**LOW PRESSURE SEWER FORCE MAIN
TYP LATERAL INSTALLATION NOT UNDER PAVEMENT**

DATE: NOV. 2022

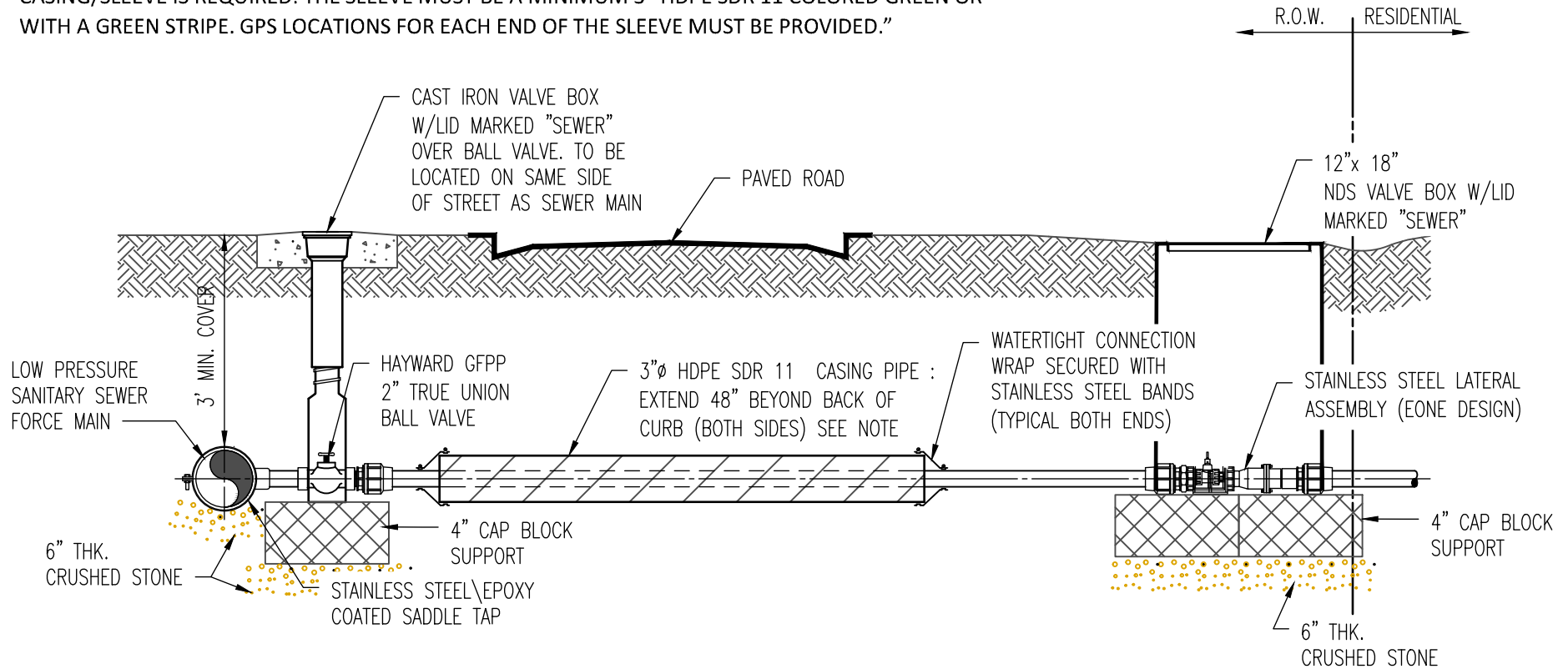
DRAWN BY: TGC

SCALE : NO SCALE



NOTE:

"IN CASES WHERE A LOW PRESSURE SEWER SERVICE MUST BE INSTALLED THROUGH STONE BACKFILL A CASING/SLEEVE IS REQUIRED. THE SLEEVE MUST BE A MINIMUM 3" HDPE SDR 11 COLORED GREEN OR WITH A GREEN STRIPE. GPS LOCATIONS FOR EACH END OF THE SLEEVE MUST BE PROVIDED."



NOTES :

1. FOR 2" SDR21 MAIN - 2" GASKET x 2" GASKET x 1 1/2" MALE THREAD x 2" MALE THREAD PVC SCH. 40 OR SCH. 80 ADAPTER.
2. NO JOINTS BETWEEN FITTINGS - CONTINUOUS PIECE OR WELDED JOINTS ONLY.
3. ALL THREADED CONNECTIONS REQUIRE RECTORSEAL TRU-BLUE THREAD SEALANT.

4. THE CONTRACTOR SHALL SUBMIT THE FOLLOWING TO MORRISTOWN UTILITIES (ROB REEL) FOR APPROVAL PRIOR TO ORDERING MATERIALS.
 - A. SHOP DRAWINGS AND PRODUCT SPECIFICATIONS THAT MEET ALL MORRISTOWN UTILITIES SPECIFICATIONS.
 - B. MANUFACTURER'S CERTIFICATION.
5. 2" SDR21 SANITY SEWER MAIN : USE 2" GASKET x 2" GASKET x 1 1/2" THREADED AND 1 1/2" MALE THREAD x 2" MALE THREAD PVC SCH. 40 OR SCH. 80 ADAPTER. SUBMTAL REQ'D TO MU FOR APPROVAL.

TYPICAL SPECIFICATIONS
AND DETAILS

**LOW PRESSURE SEWER FORCE MAIN
TYPICAL LATERAL INSTALLATION UNDER PAVEMENT**

DATE: NOV. 2022

DRAWN BY: TGC

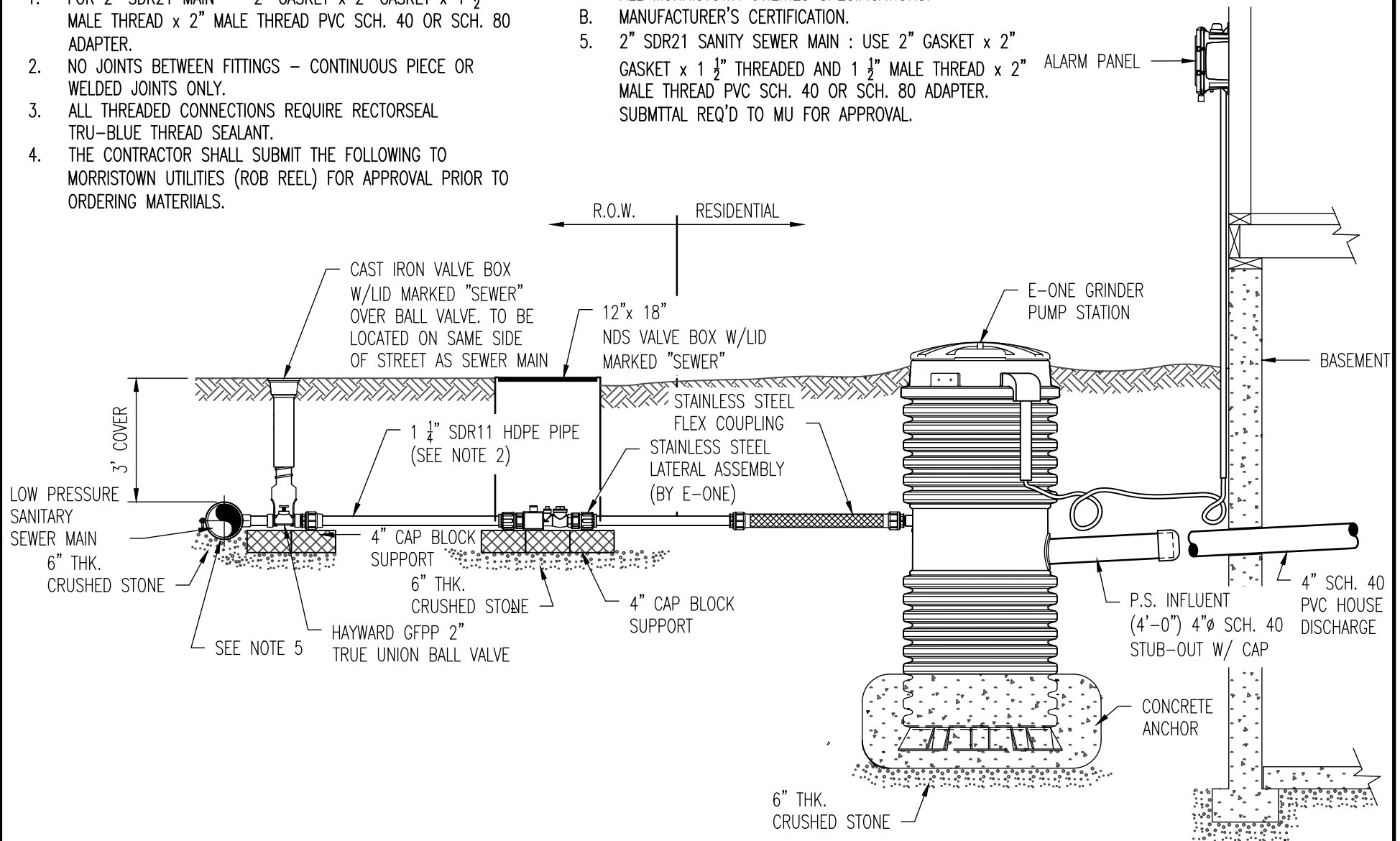
SCALE : NO SCALE



NOTES :

1. FOR 2" SDR21 MAIN - 2" GASKET x 2" GASKET x 1 1/2" MALE THREAD x 2" MALE THREAD PVC SCH. 40 OR SCH. 80 ADAPTER.
2. NO JOINTS BETWEEN FITTINGS - CONTINUOUS PIECE OR WELDED JOINTS ONLY.
3. ALL THREADED CONNECTIONS REQUIRE RECTORSEAL TRU-BLUE THREAD SEALANT.
4. THE CONTRACTOR SHALL SUBMIT THE FOLLOWING TO MORRISTOWN UTILITIES (ROB REEL) FOR APPROVAL PRIOR TO ORDERING MATERIALS.

- A. SHOP DRAWINGS AND PRODUCT SPECIFICATIONS THAT MEET ALL MORRISTOWN UTILITIES SPECIFICATIONS.
- B. MANUFACTURER'S CERTIFICATION.
5. 2" SDR21 SANITY SEWER MAIN : USE 2" GASKET x 2" GASKET x 1 1/2" THREADED AND 1 1/2" MALE THREAD x 2" MALE THREAD PVC SCH. 40 OR SCH. 80 ADAPTER. SUBMITTAL REQ'D TO MU FOR APPROVAL.



TYPICAL SPECIFICATIONS
AND DETAILS

LOW PRESSURE SEWER FORCE MAIN TYPICAL LATERAL INSTALLATION

DATE: NOV. 2022

DRAWN BY: TGC

SCALE : NO SCALE



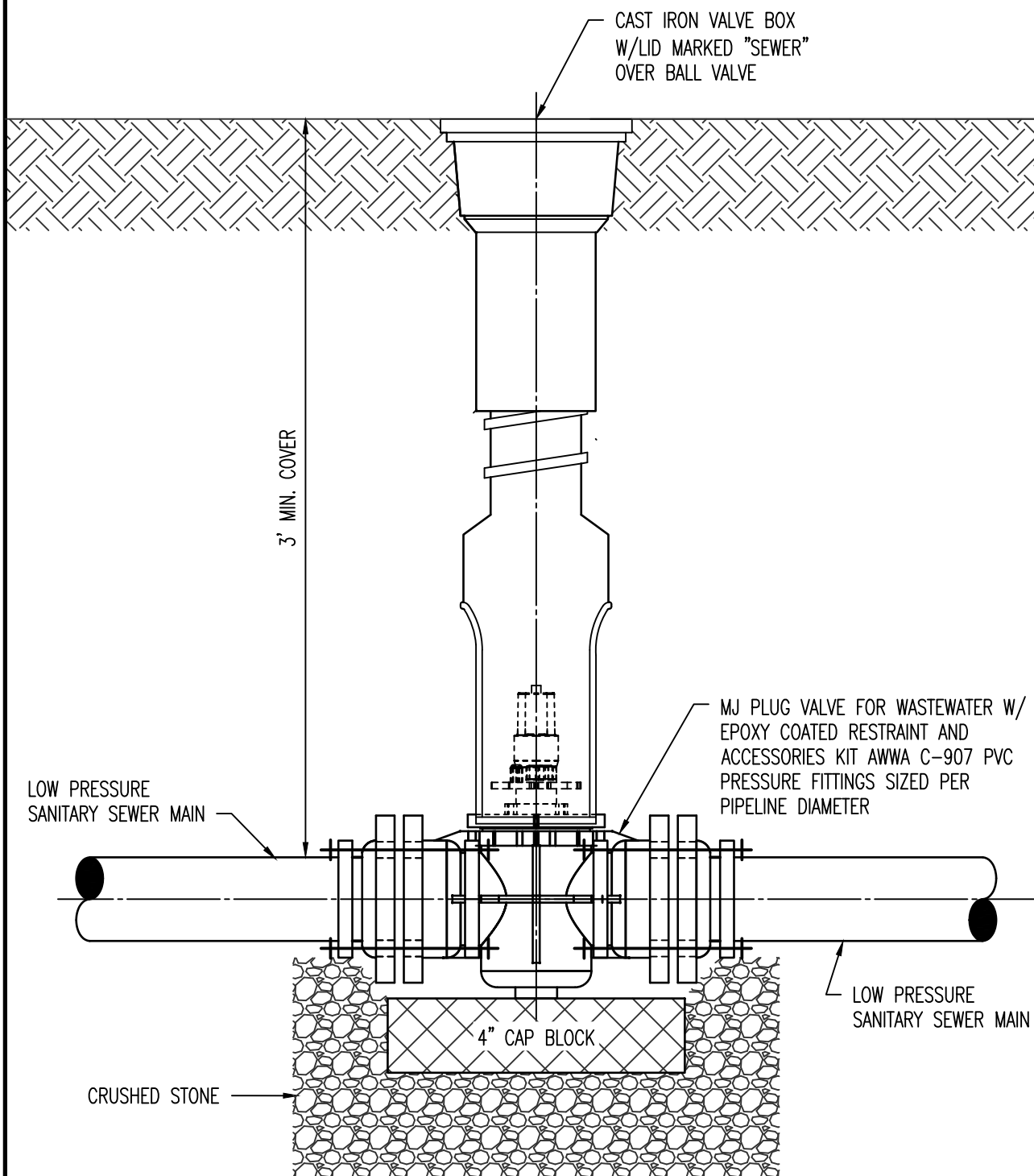
DATE: FEB. 2023

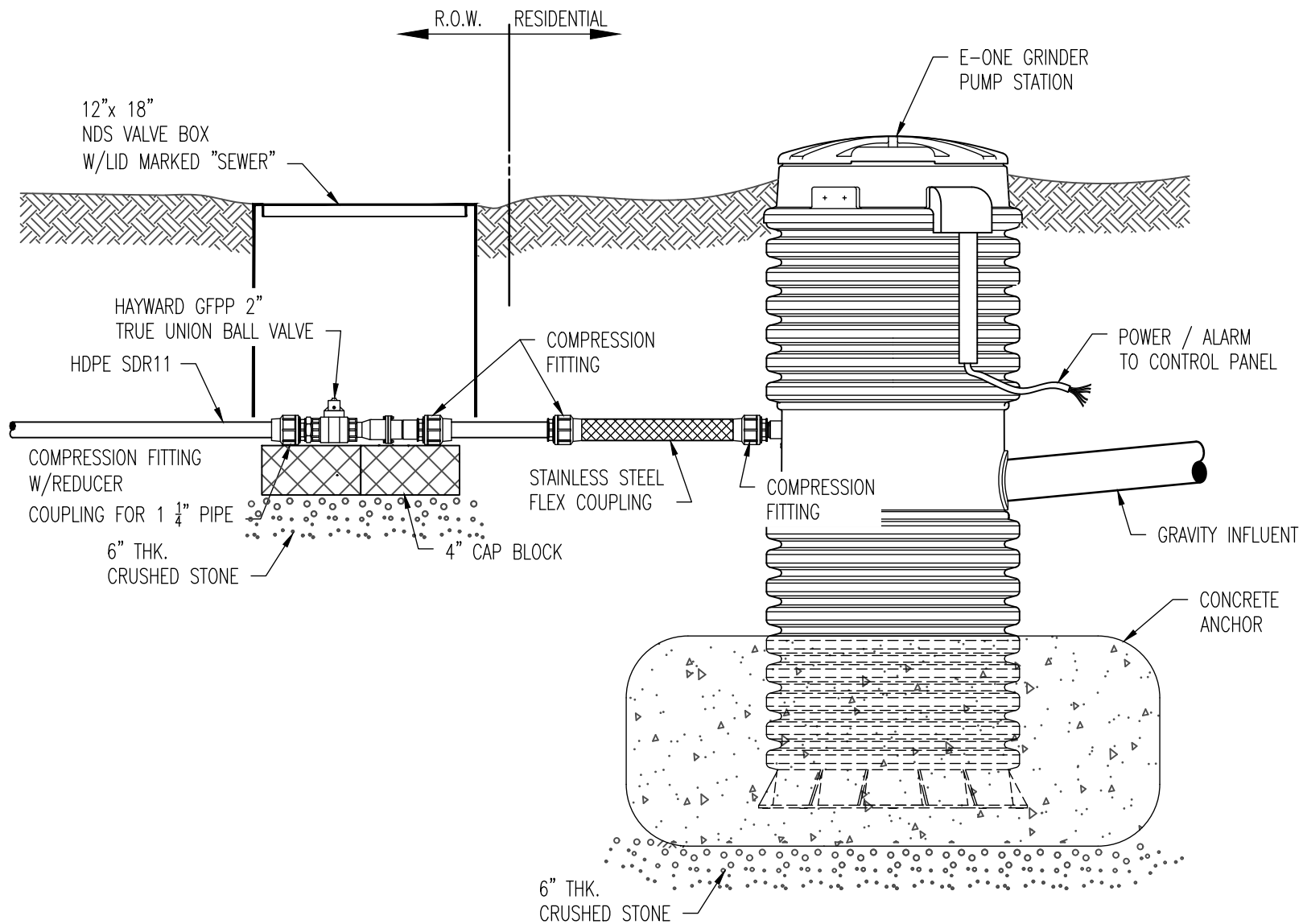
DRAWN BY: TGC

SCALE: 1 1/2" = 1' -0"

LOW PRESSURE SEWER FORCE MAIN MAINLINE VALVE W/ RETAINER GLANDS

TYPICAL SPECIFICATIONS
AND DETAILS





TYPICAL SPECIFICATIONS
AND DETAILS

LOW PRESSURE SEWER FORCE MAIN TYP. PLASTIC LATERAL INSTALLATION SDR 11 HDPE

DATE: NOV. 2022

DRAWN BY: TGC

SCALE : NO SCALE

